

BKZ 9928C

ESTIMATED WEIGHT SUMMARY

*Total Tank & Chassis 20100#

Maximum Gross with (8) Jackscrews = 400,000#, Max. Load = 377,000#
 Maximum Gross with (10) Jackscrews = 500,000#, Max. Load = 477,000#

*Trailer weight does not include any customer added equipment.

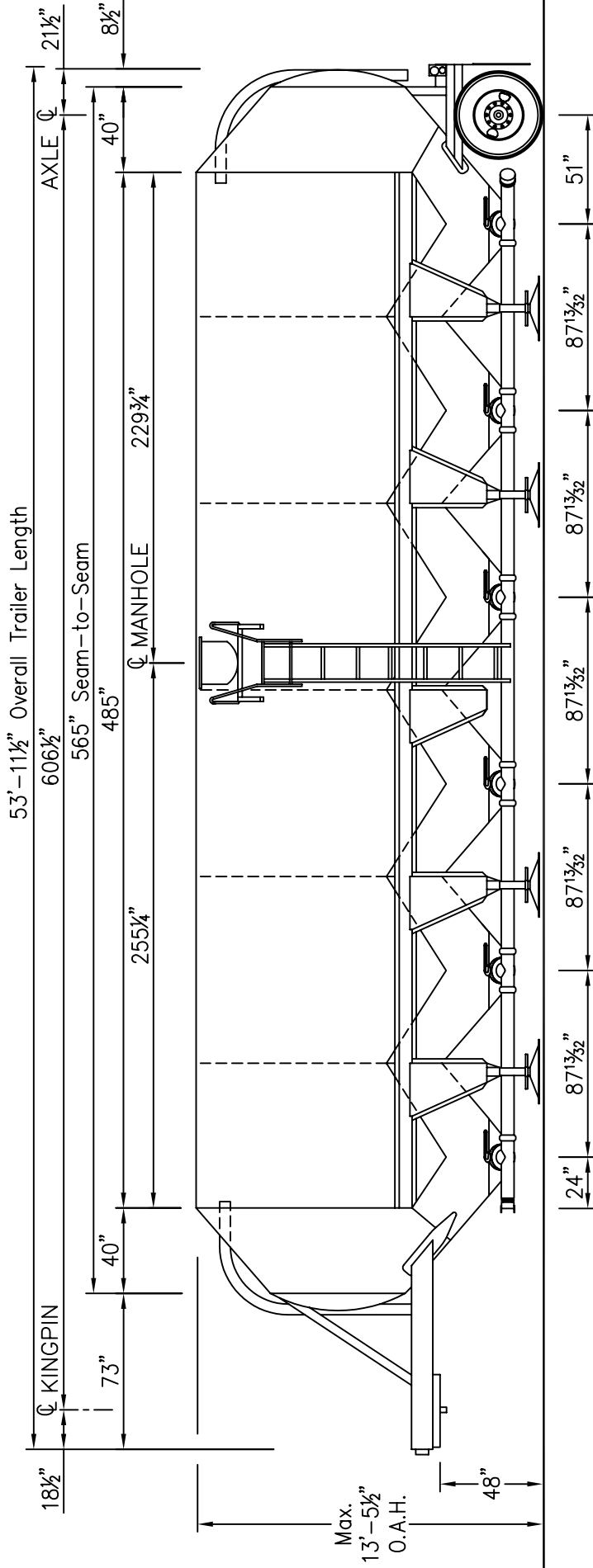
MODEL: HEB-H1-J4100X6

Sheet 1 of 5

CONSTRUCTION: HSLA CARBON STEEL (132" WIDTH)

THIS UNIT IS ENGINEERED AND CONSTRUCTED OF MATERIALS SHOWN TO HAUL THE COMMODITIES INDICATED AND IS INTENDED FOR OPERATION AT REASONABLE SPEEDS UNDER NORMAL ROAD CONDITIONS. NO RESPONSIBILITY SHALL BE ASSUMED BY LBT, INC. FOR:

1. WEIGHTS OR CAPACITY OF TRACTOR.
 2. OVERLOADS OR DAMAGE IF COMMODITY WEIGHTS EXCEED THOSE SHOWN OR MODEL RATING.
 3. DAMAGE CAUSED BY COMMODITIES, CLEANING, OR OPERATION NOT COMPATIBLE WITH MATERIALS OF CONSTRUCTION SPECIFIED.
- SEE ATTACHED SHEET(S) FOR SPECIFICATIONS.



NOTE: DRAWING NOT TO SCALE

REF:

OPERATION STATIONARY STORAGE

LET.	REVISIONS	ENG.	DATE

LBT Inc.
 P.O. BOX 24209
 OMAHA, NE 68124-0209
 T: (402) 333-4900
 F: (402) 333-0685

CUSTOMER	
DEALER	
COMMODITY	CEMENT OR BARITE
CAPACITY	4100 CU.FT. S.F.
DATE	BY
	BKZ 9928C