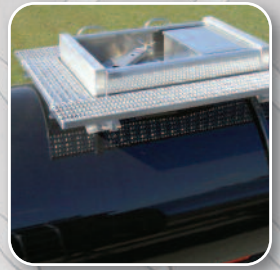


# THE TOUGHEST TANK

*in the Industry!*



**LBT**  
*Inc.*

11502 I Street  
Omaha, NE 68137  
P.O. Box 24209

PH: 1.402.333.4900  
FAX: 1.402.333.0685  
[www.lbt-inc.com](http://www.lbt-inc.com)

**Aluminum  
Hot Product**

# Aluminum Hot Product

## ESTIMATED WEIGHT SUMMARY

Payload	6617 Gals. @ 8.0 #/Gal.	52940#	86.5% Shell Full
Tank	5920#	*Trailer 10560	Max. Load 57000#
Chassis	4640#		GVWR 68000#
Tractor		16500	GAWR 20000#
Total		80000#	

\* Trailer weight does not include any customer added equipment such as hoses, fittings, etc.

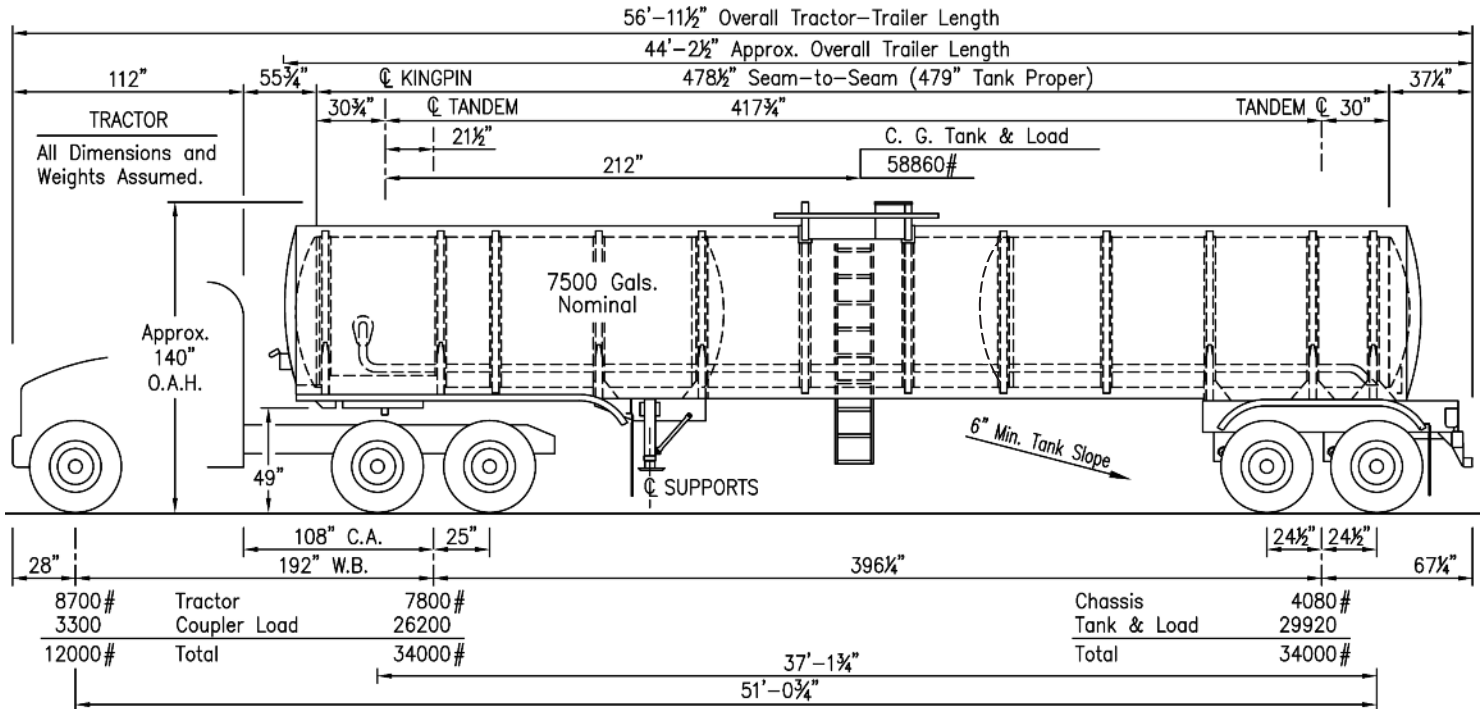
MODEL: TAH-HA2-IR7500X1

Sheet 1 of 7

CONSTRUCTION: ALUMINUM (96" WIDTH)

THIS UNIT IS ENGINEERED AND CONSTRUCTED OF MATERIALS SHOWN TO HAUL THE COMMODITIES INDICATED AND IS INTENDED FOR OPERATION AT REASONABLE SPEEDS UNDER NORMAL ROAD CONDITIONS. NO RESPONSIBILITY SHALL BE ASSUMED BY LBT, INC. FOR:

1. WEIGHTS OR CAPACITY OF TRACTOR.
2. OVERLOADS OR DAMAGE IF COMMODITY WEIGHTS EXCEED THOSE SHOWN OR MODEL RATING.
3. DAMAGE CAUSED BY COMMODITIES, CLEANING, OR OPERATION NOT COMPATIBLE WITH MATERIALS OF CONSTRUCTION SPECIFIED. SEE ATTACHED SHEET(S) FOR SPECIFICATIONS.



NOTE: DRAWING NOT TO SCALE

REF:

OPERATION NATIONAL NETWORK



P.O. Box 24209  
 Omaha, NE 68124-0209

PH: 1.402.333.4900  
 FAX: 1.402.333.0685

CUSTOMER

DEALER

COMMODITY ASPHALT @ 8.0 #/GAL

CAPACITY 7500 GALS. + 5%

DATE

BY

BKZ 9951 REV. B

LET.	REVISIONS	ENG.	DATE

**CHASSIS FRAME** – T304 stainless steel huck bolted to rear three tank bolsters

**UNDERCONSTRUCTION** – Hendrickson AANT Intraax with "HP" spindles

**DUMP VALVE** – (1) manual type installed at front of chassis on roadside

**BRAKE SYSTEM** – Haldex 4S/2M ABS with "TRS" system

**HUBS AND DRUMS** – Walther EMC Dura-Light with cast drums

**WHEELS** – (8) 22.5 x 8.25 aluminum disc, machine finish

**TIRES** – (8) 11R22.5(G) trailer type

**FENDERS** – Aluminum at front and rear with rubber bushed mountings

**BUMPER** – T304 stainless steel split type

**CAPACITY** – 7500 gallons + 2% outage

**COMPARTMENTS** – One

**BAFFLES** – (2), dished and flanged

**CONSTRUCTION** – Cylindrical, with fully welded hat section external rings

**DOT CODE** – Non-DOT specification for elevated temperature materials

**LOADING TEMPERATURE** – 400 degrees F. maximum

**MANHOLE** – (1) 19" full opening with centering ring and single hold-down

**VENTING** – Insulated, free breathing box type, with 3" internal drain line

**FLASHING** – Aluminum spillbox at manhole with (2) external drain lines

**OVERTURN PROTECTION** – At spillbox and pump-off line valve per DOT requirements

**PLATFORM** – 11-3/4" wide aluminum on all four sides of spillbox

**LADDER** – Aluminum to platform on curbside with grabhandles

**HOSE CARRIER** – (1) 8" x 4" x 21' aluminum trough with straps and drain hose at rear

**PAINT** – Premium two-part silver on carbon steel parts

**INSULATION** – 6" fiberglass compressed to 5". Foil backed fiberglass over rings

**JACKETING** – Aluminum with lock seam heads and full underlayment, (3) center wraps black

**THERMOMETER** – (1) 3" dial x 12" stem type, curbside center, 50 to 550 degrees F.

**SAMPLING VALVE** – (1) 3/4" globe valve in rear head, offset to roadside

**LIGHTS AND WIRING** – Truck-Lite flanged LED's with ss security rings

**OUTLET VALVE** – (1) 4" aluminum asphalt valve welded in rear head at belly

**DISCHARGE PIPING** – 4" aluminum sch40 pipe at rear, sloped down 20 degrees

**DISCHARGE VALVE** – (1) 4" aluminum hose gate valve with adapter and cap

**REGISTRATION HOLDER** – (1) Truck-Lite 97960 on curbside near support frame

**SEALING PROVISIONS** – At all inlets, outlets and flanges for band type seals

NOTES: Tank in photo on reverse side may include optional equipment. Sketch above shows a typical standard model.